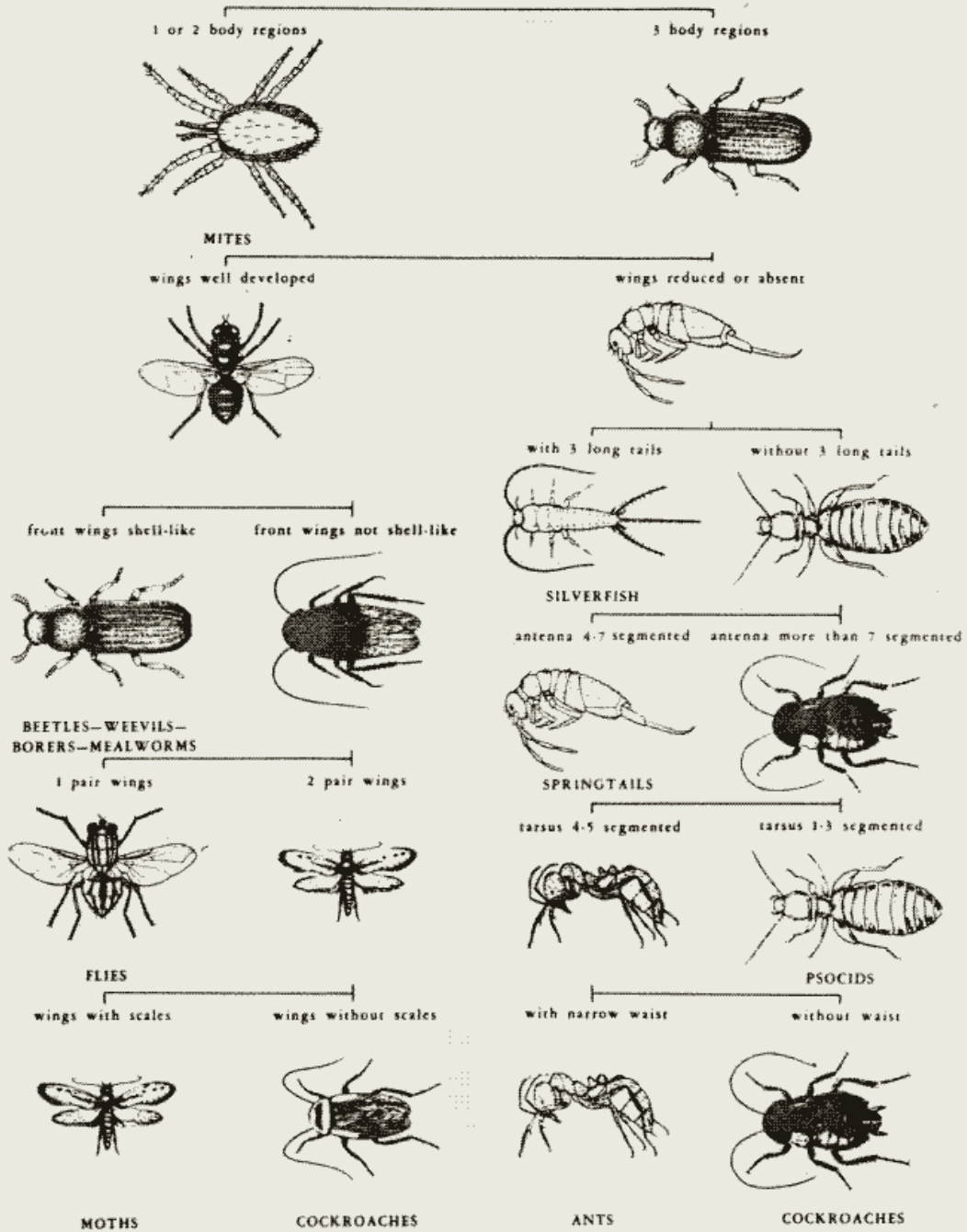
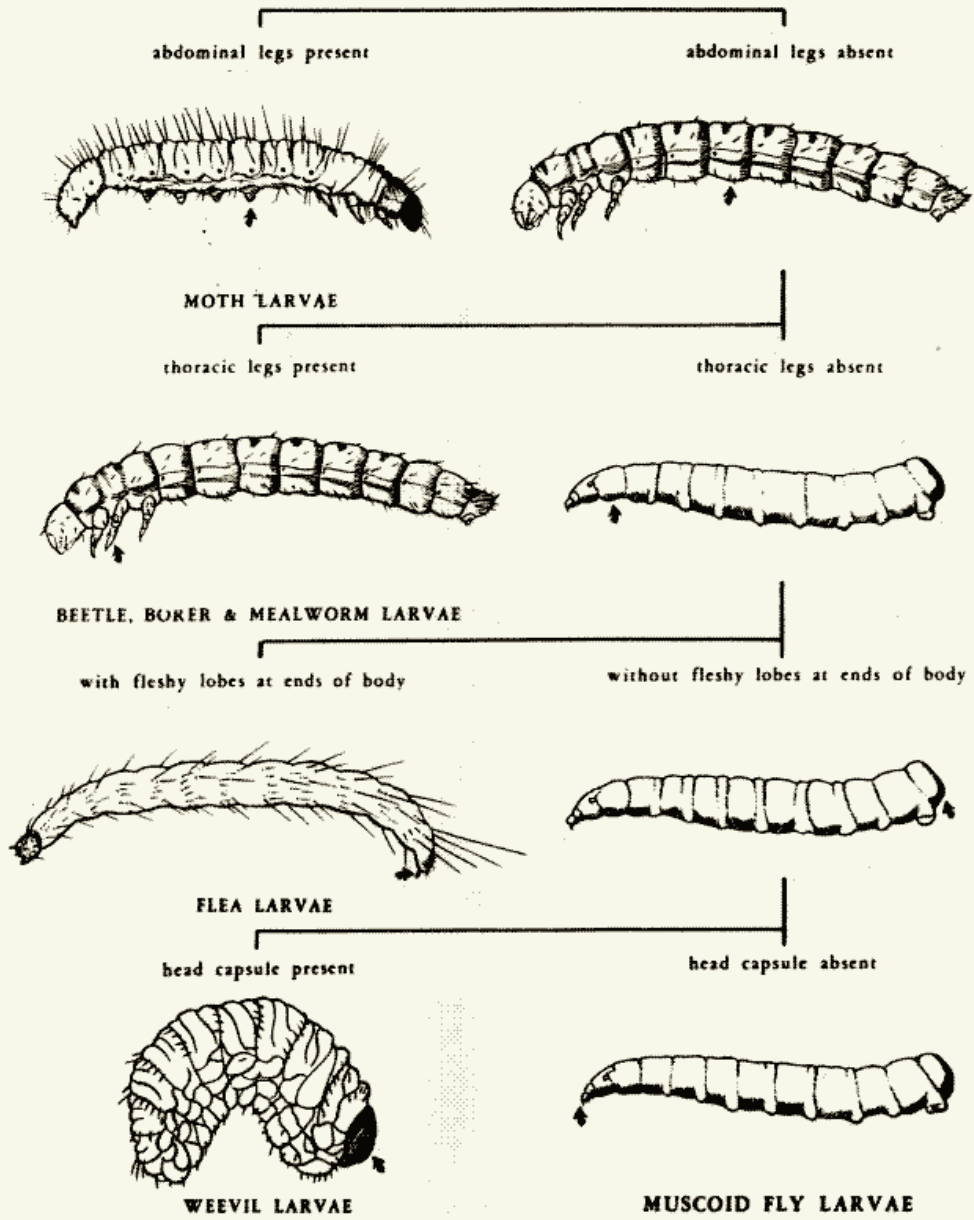


HOUSEHOLD AND STORED-FOOD PESTS: KEY TO COMMON ADULTS
 Harold George Scott & Chester J. Stojanovich

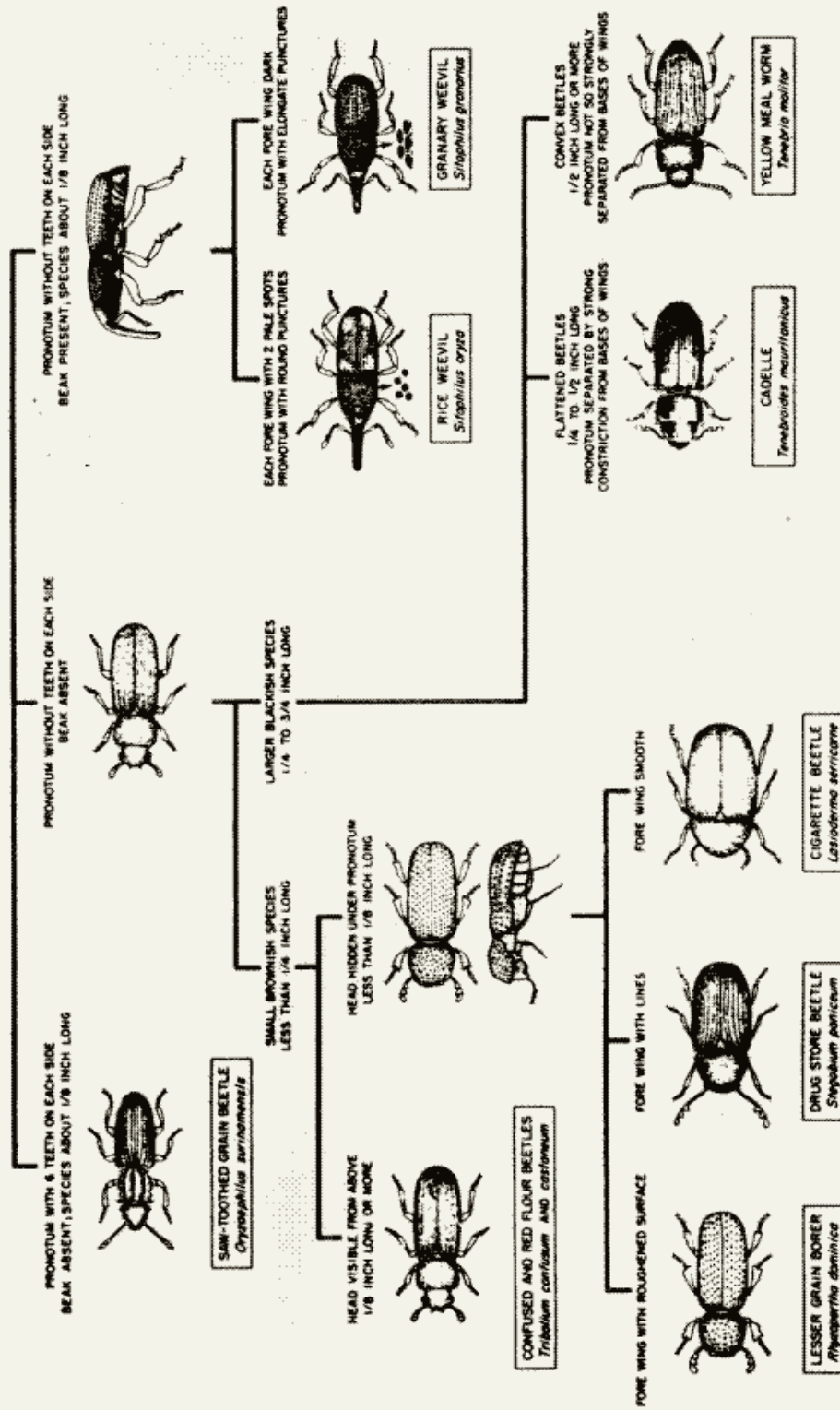


HOUSEHOLD AND STORED-FOOD PESTS: PICTORIAL KEY TO COMMON LARVAE
 Chester J. Stojanovich & Harold George Scott



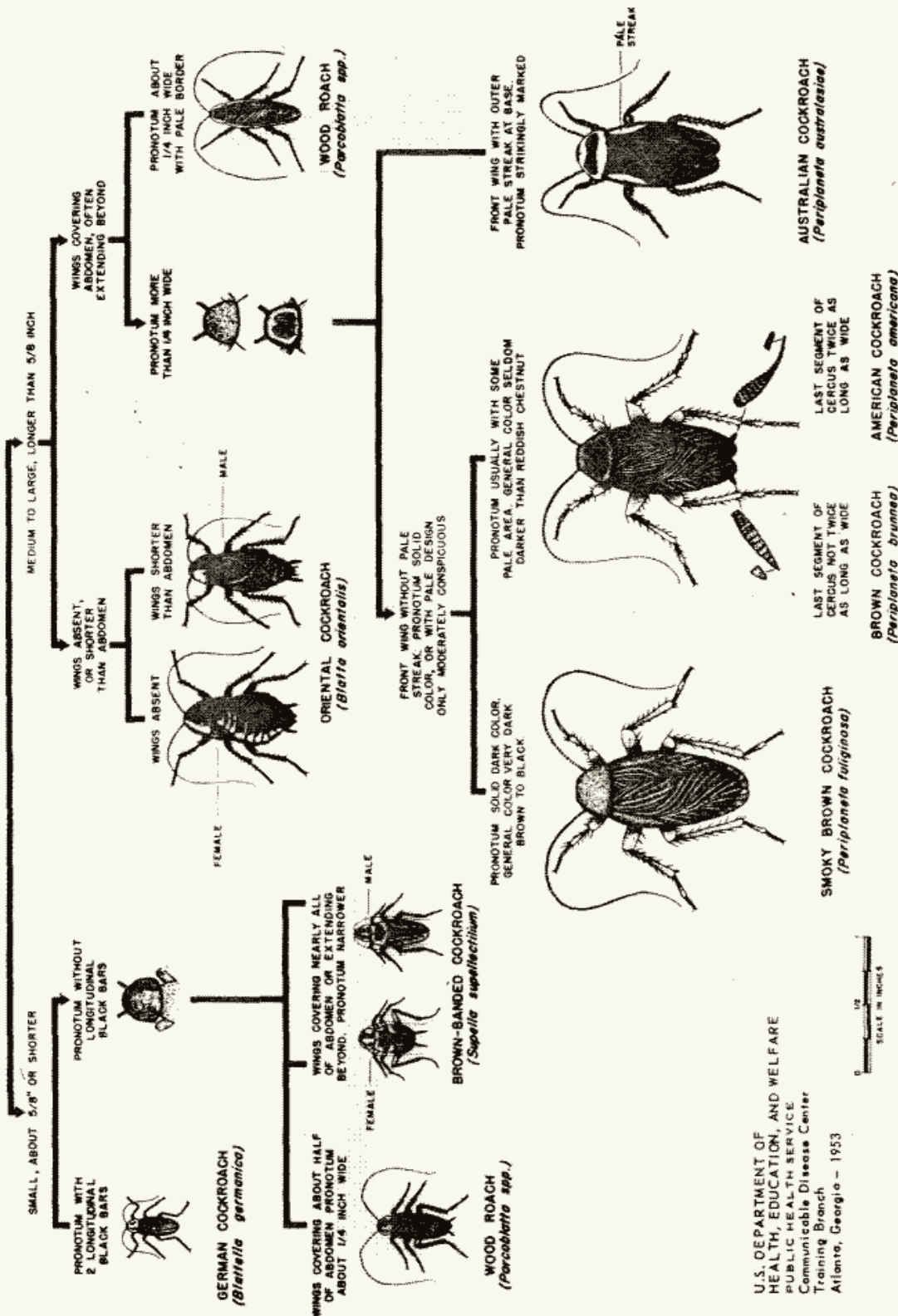
BETLES: PICTORIAL KEY TO SOME SPECIES COMMONLY ASSOCIATED WITH STORED FOODS

Harry D. Pratt



COCKROACHES: PICTORIAL KEY TO SOME COMMON SPECIES

Harry D. Pratt

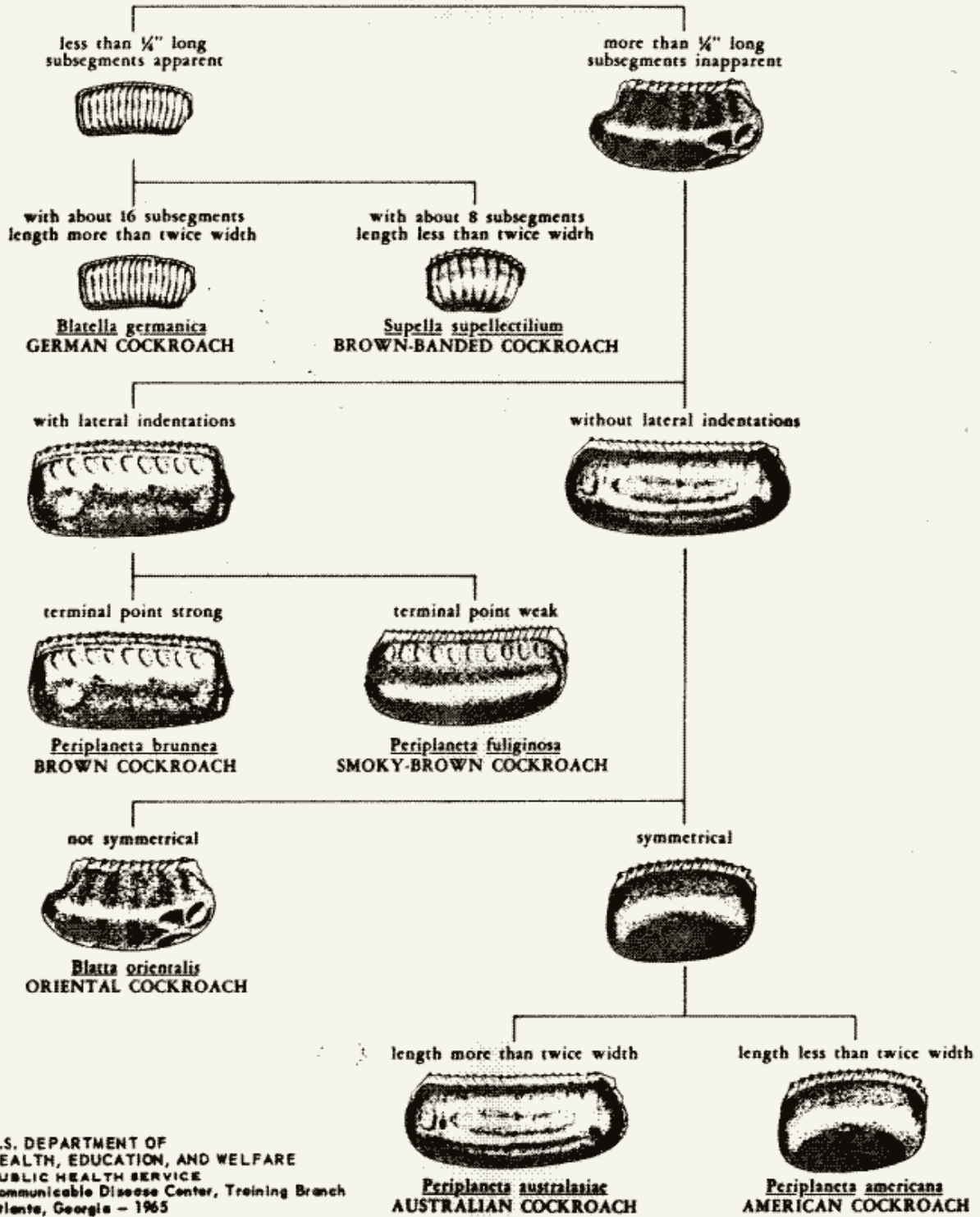


U.S. DEPARTMENT OF HEALTH, EDUCATION, AND WELFARE
 PUBLIC HEALTH SERVICE
 Communicable Disease Center
 Training Branch
 Atlanta, Georgia - 1953

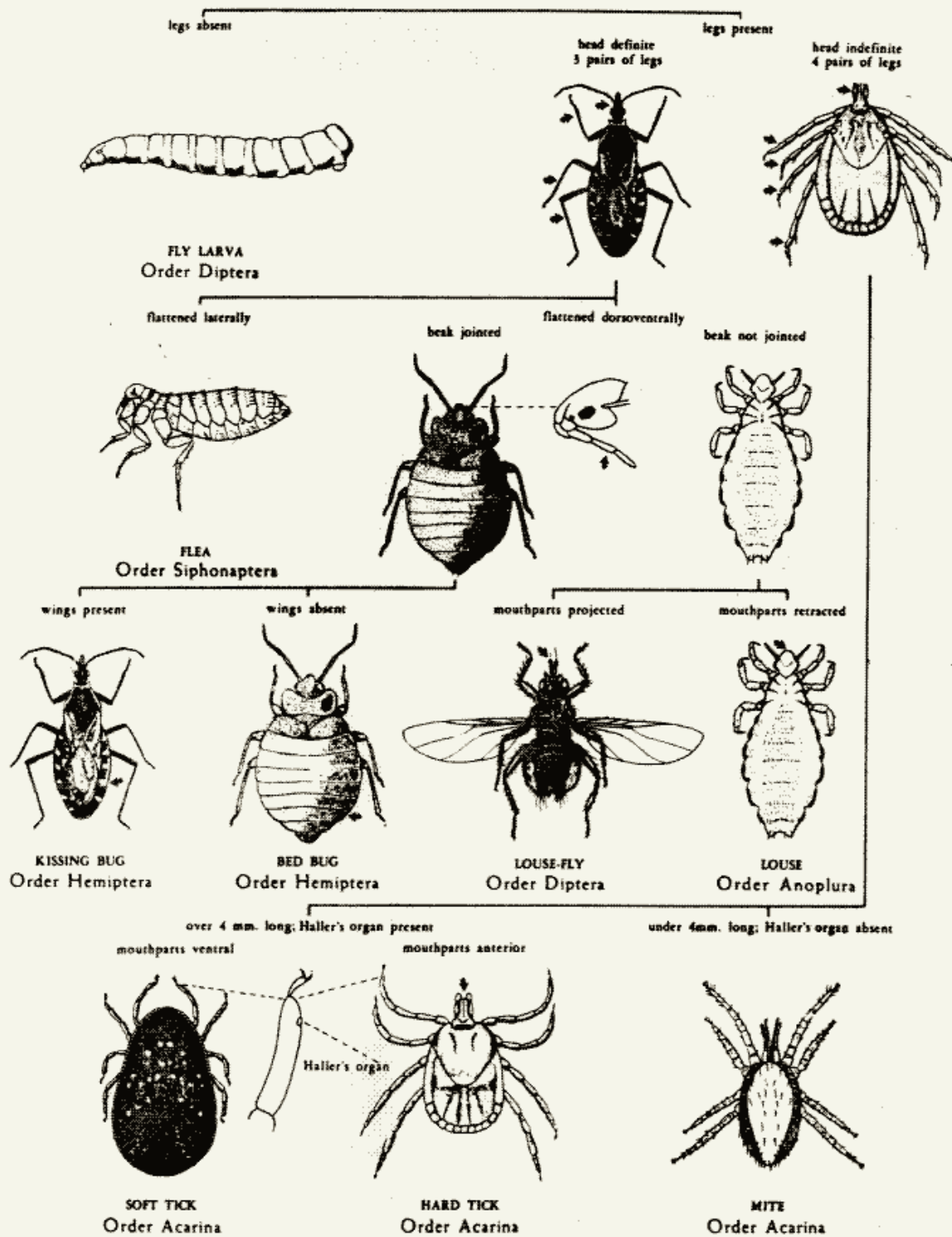


COCKROACHES: KEY TO EGG CASES OF COMMON DOMESTIC SPECIES

Harold George Scott, Ph.D. and Margery R. Borom

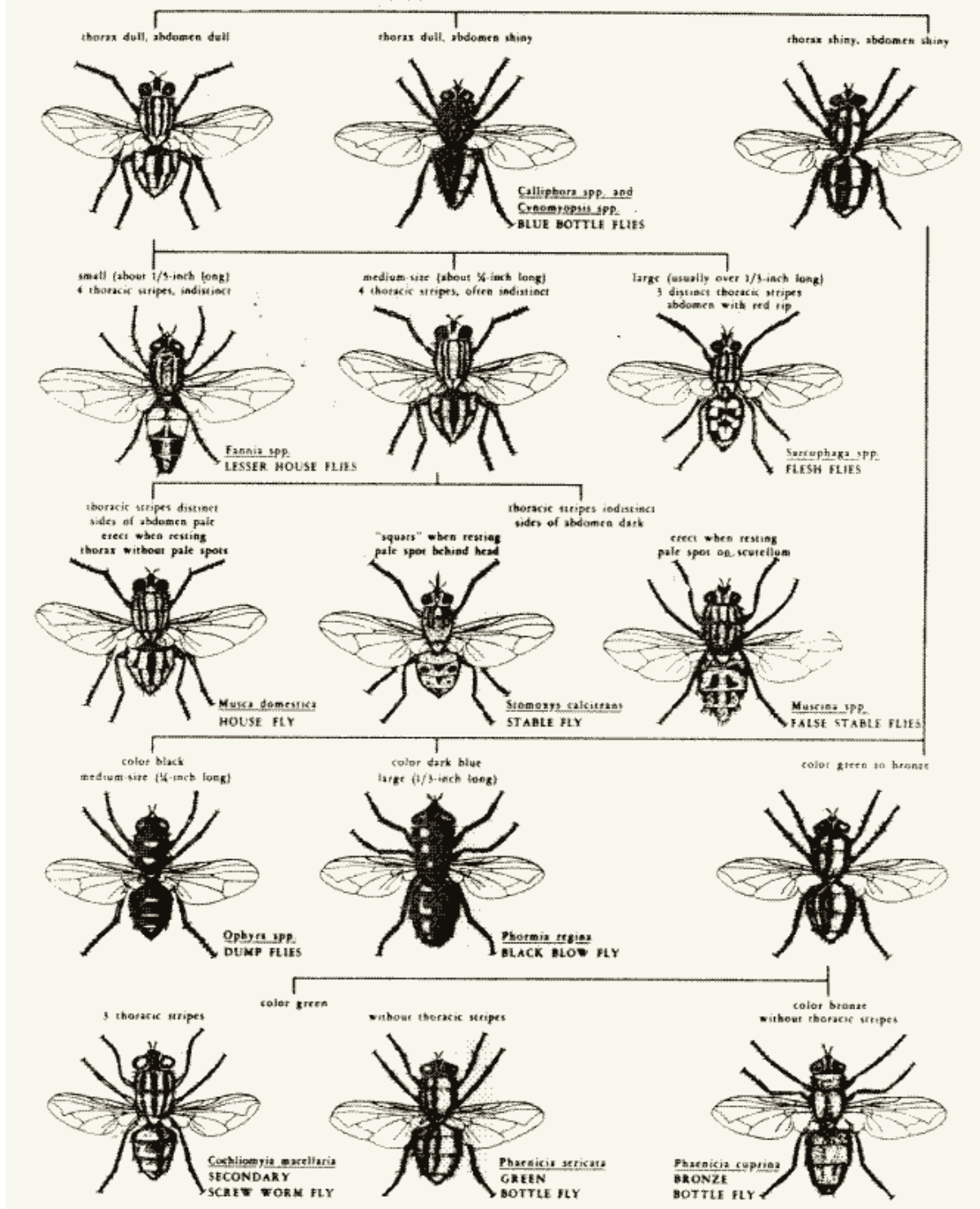


HUMAN ECTOPARASITES: KEY TO COMMON GROUPS
 Chester J. Stojanovich and Harold George Scott

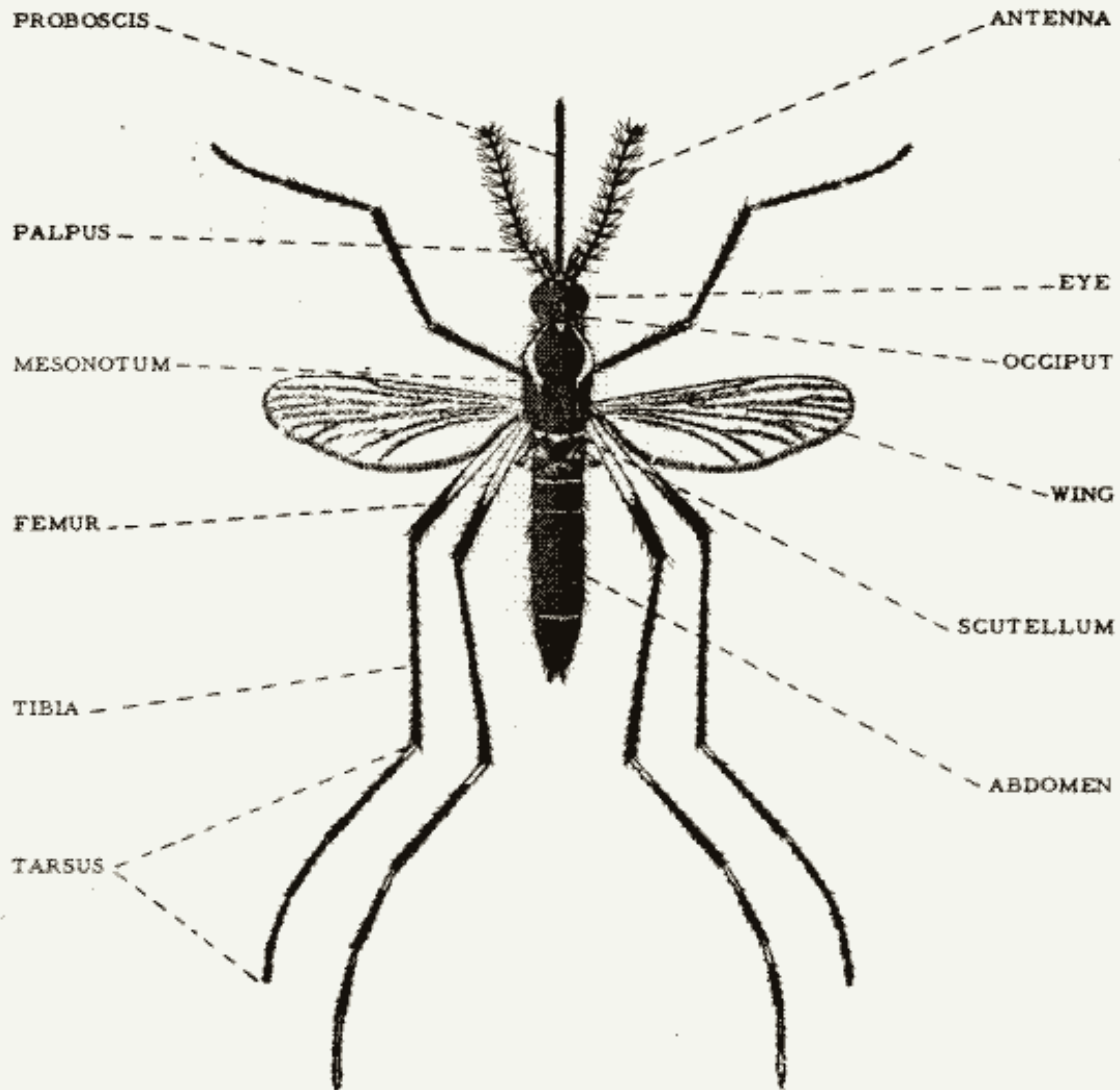


DOMESTIC FLIES: PICTORIAL KEY TO COMMON SPECIES

Harold George Scott and Margery R. Borom

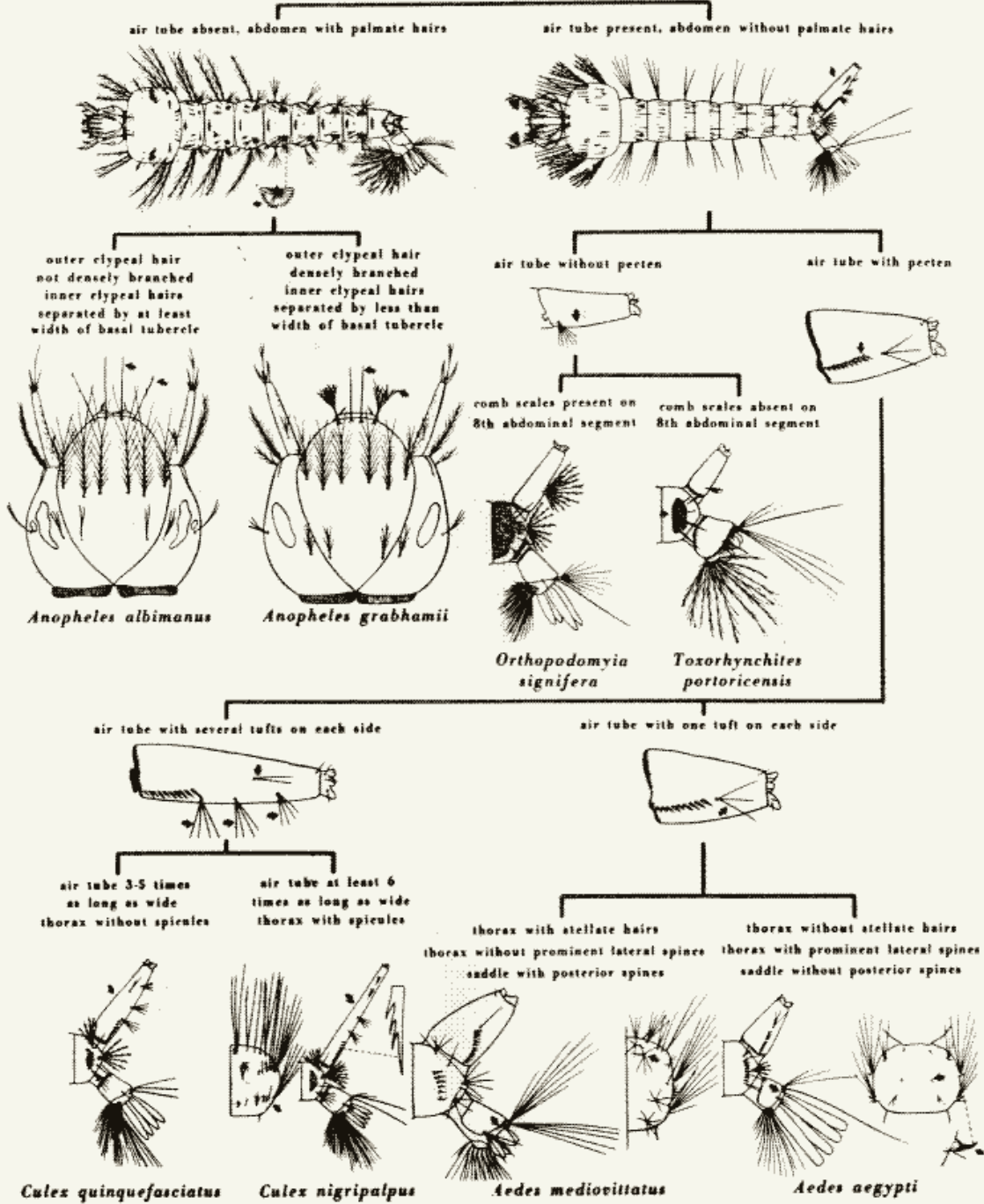


MOSQUITO DIAGRAM – ADULT FEMALE AEADES
Chester J. Stojanovich and Harold George Scott



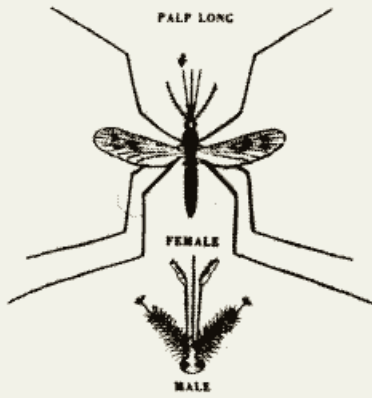
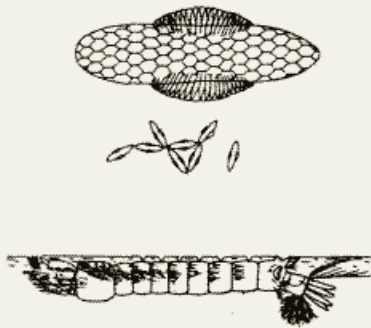
MOSQUITOES: PICTORIAL KEY TO SOME COMMON LARVAE OF PUERTO RICO
 FOUND IN CONTAINERS

Harry D. Pratt and Chester J. Stojanovich

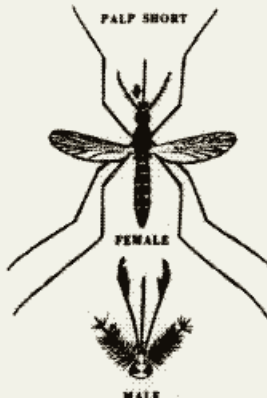
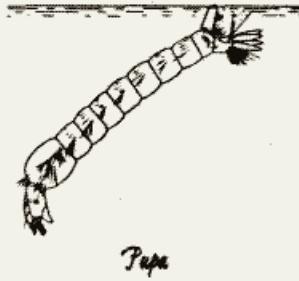


MOSQUITOES: CHARACTERISTICS OF ANOPHELINES AND CULICINES
 Kent S. Littig and Chester J. Stojanovich

ANOPHELES



AEDES



Resting Position



CULEX

